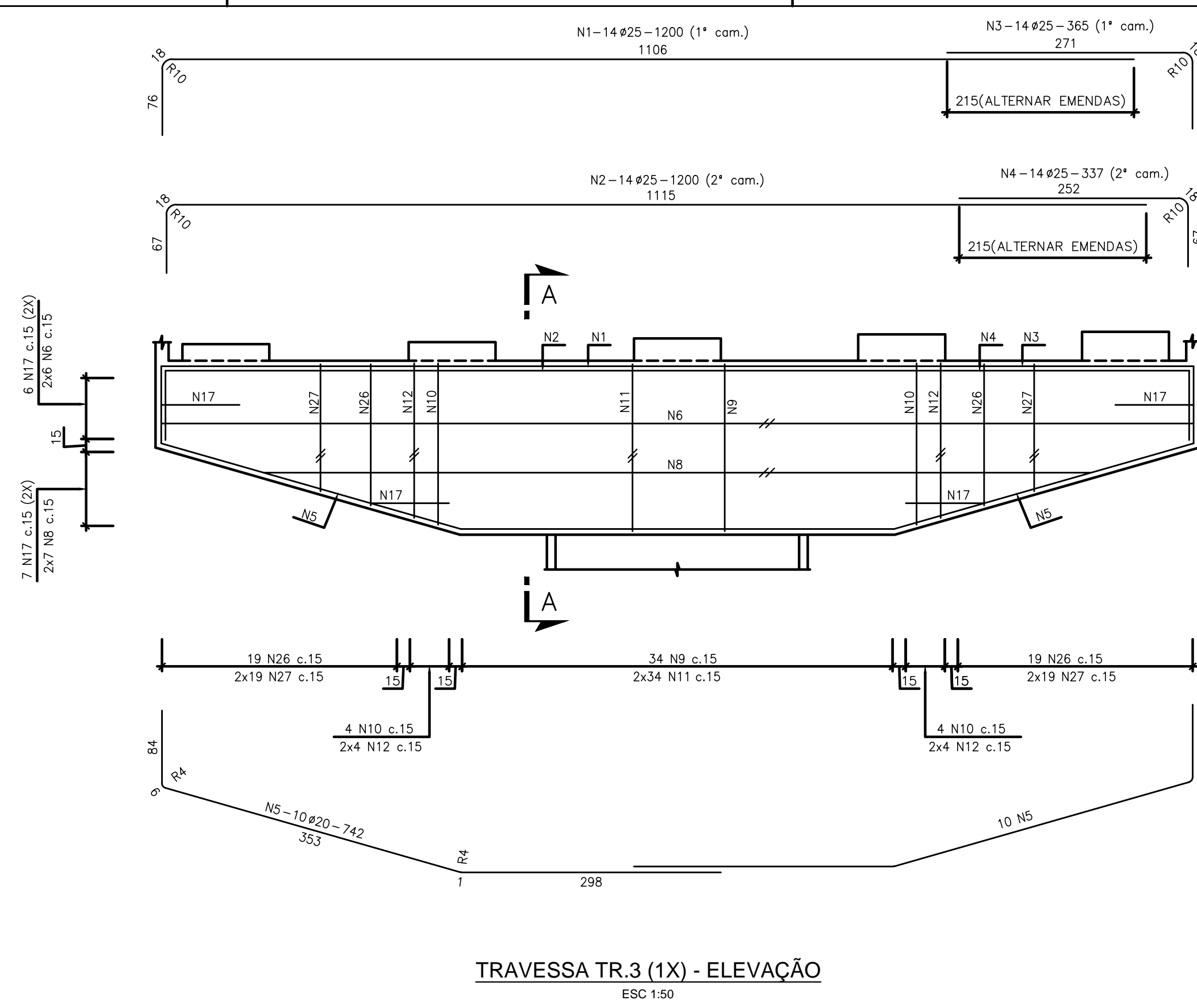
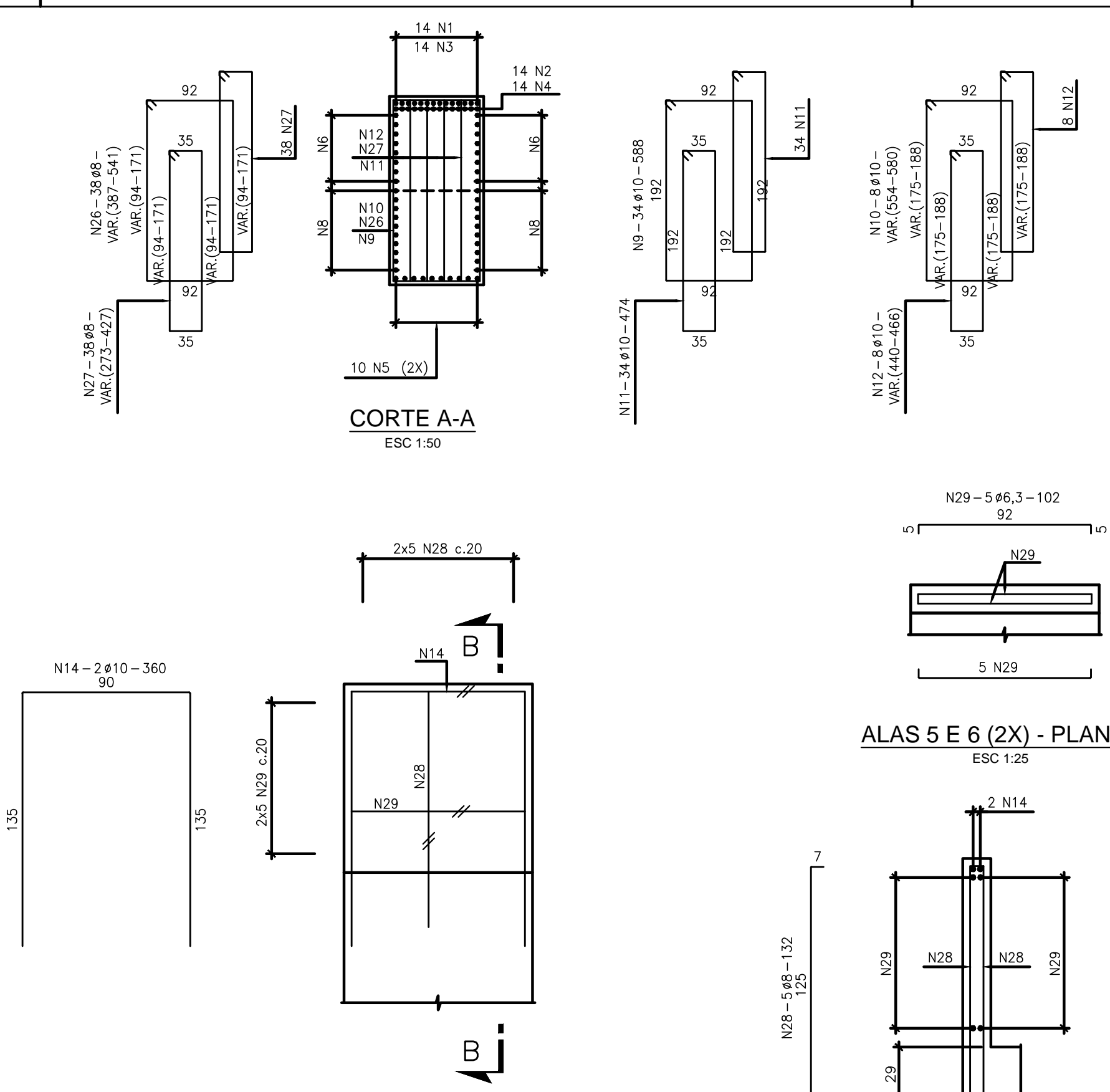


TRAVESSA TR.3 (1X) - PLANTA  
ESC 1:50



TRAVESSA TR.3 (1X) - ELEVACÃO  
ESC 1:50



ALAS 5 E 6 (2X) - ELEVACÃO  
ESC 1:25

ALAS 5 E 6 (2X) - PLANTA  
ESC 1:25

CORTE B-B  
ESC 1:25

